

# High Pressure Washer Hose Reel

---

## Hose Reel H301 & H302

### Specifications

Capacity: 100 feet of 3/8" hose (H301)

50 feet of 3/8" hose (H302)

Inlet: 3/8" NPT( BSPT option)

or 1/4" NPT( BSPT option)

Hose Outlet: 3/8" NPT( BSPT option)

or 1/4" NPT( BSPT option)

Maximum Pressure: 3000PSI



Read the following precautions and instructions

before you begin assembly or using.

Keep these instructions in a dry and convenient location

for future reference.

### Safety Precautions

1. Make sure incoming pressure does not exceed the rated pressure for hose.
2. Use the proper eye protection when assembling and using the hose reel.
3. Assemble the hose reel on a clean workbench.
4. Use soap and water when checking for leaks.
5. Keep children away from the work area.

Warning: Exposure of skin directly to pressurized air or fluids could result in severe bodily injury.

### Unpacking

When you receive your new Hose Reel, some assembly will be required. Check to ensure that you have received the following loose parts.

Part No.	Q'ty	Description
2-5,23,24	1	Handle Assembly
21,22	1	Swivel Valve Assembly

### Installation and Assembly

Note: You will need to purchase appropriate hardware for mounting your new reel.

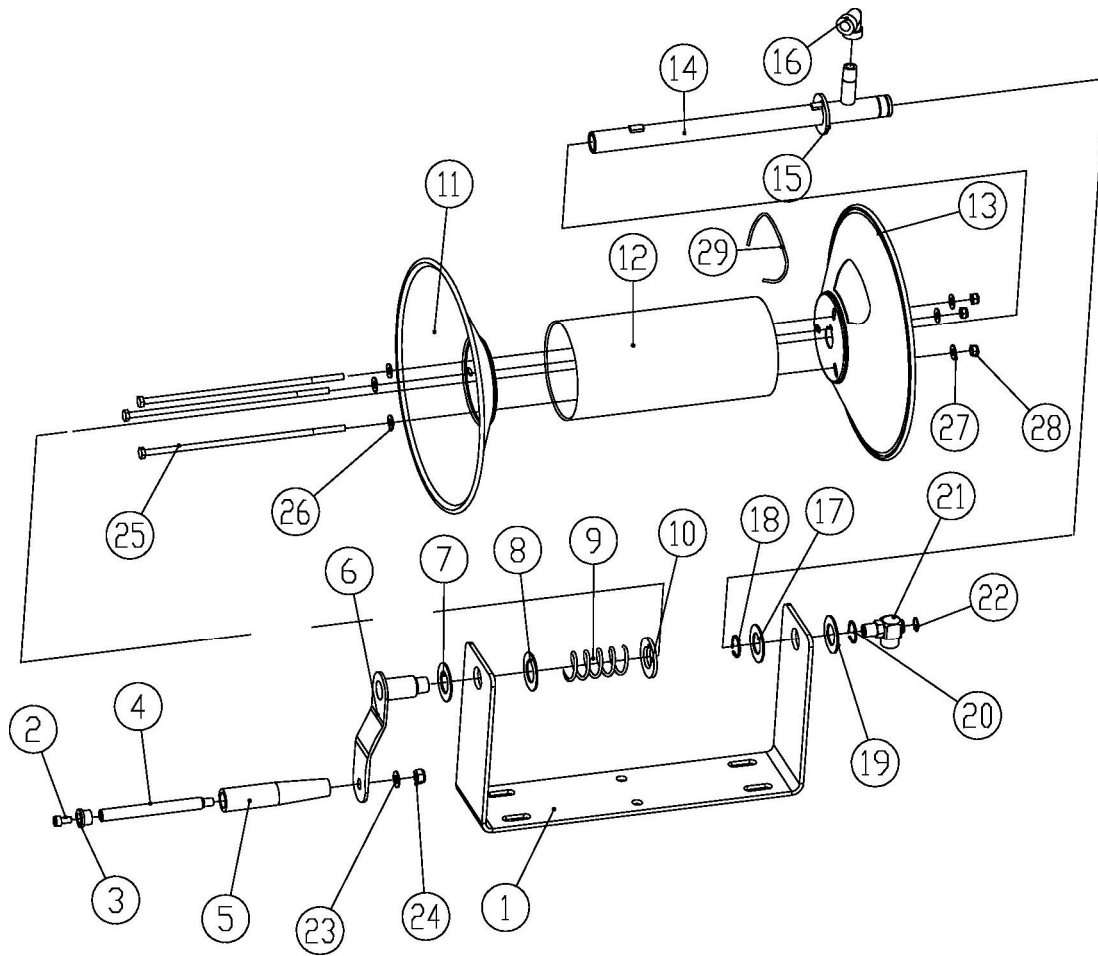
Holes have been provided in the reel base, for mounting on a suitable flat surface. You will also need to supply hose for the reel. Refer to specification to determine the correct hose length.

Refer to Diagram for assembly.

1. Attach handle to the link lever attach using the following parts: # 2-5, 23, and 24.
2. Apply Teflon tape or pipe sealant to swivel valve assembly #21. Thread swivel into end of axle, and tighten.
3. Mount hose reel in a suitable location, by using the four holes in the reel base. 3/8 inch, or 10MM bolts may be used. Mounting hardware is customer's choice.
4. Apply Teflon tape or pipe sealant to supply hose fitting threads, connect to supply fitting #19 on reel axle, and tighten. Supply hose can now be connected to pressure washer supply.
5. Apply Teflon tape or pipe sealant to reel hose fitting threads. Attach this hose to the reel swivel valve and tighten. Feed the rest of hose through the flange opening, and wind the remaining hose onto the reel. Note: To avoid damage to the swivel, use a wrench to support the swivel fitting while tightening the hose.

### **Limited Warranty**

1. The manufacturer warrants this hose reel against defects in material and craftsmanship, for a period of 12 months from date of purchase.
2. Hose, if supplied with reel, and O-rings are deemed to be normal wear items; not warranted.
3. Manufacturer's liability is limited to replacement or repair of defective material within the warranty period, when returned freight prepaid to the distributor or their designated service depot.
4. The warranty does not cover damage caused by accident, misuse or faulty installation.
5. The reel must be installed and maintained in compliance with the instructions.



### *Parts List*

Part No.	Description	Quantity	Part No.	Description	Quantity
1	Base	1	15	Fixed washer (Welded axle)	1
2	Screw	1	16	Outlet fitting	1
3	Rubber sleeve	1	17	Washer	1
4	Handle	1	18	Spring washer	1
5	Handle sleeve	1	19	Washer	1
6	Link lever	1	20	Spring washer	1
7	Washer	1	21	Swivel valve	1
8	Washer	1	22	Spring washer	1
9	Spring	1	23	Washer	1
10	Washer	1	24	Nut	1
11	Flange A	1	25	Screw	3
12	Sleeve	1	26	Washer	3
13	Flange B	1	27	Washer	3
14	Axle	1	28	Nut	3
			29	Protector	1